



January 2019

WATT'S NEWS



CMELD would like to wish everyone a Happy and Healthy New Year!

THE TOWN HALL WILL BE CLOSED ON MONDAY, JANUARY 21, IN HONOR OF MARTIN LUTHER KING DAY

Please keep in mind:

- When paying your CMELD and Water Bills it is important to enclose the "return portion" of your bill with payment in order to identify the proper account.
- When using online bill pay, personal check or money order, please indicate your entire customer number.
- If you are paying 2 or more bills with one check, indicate account numbers separately and the amount to be applied to each.
- Remember, if paying both electric and water bills at the same time they must be separate payments. Water payments should to be made to Chester Water Department.

How do snowmen travel around?

By icicle!!!

What is the favorite Mexican food of snowmen?

Brrrrr-itos

What do snowmen eat for breakfast?

Frosted Flakes!!!

What do you find in an empty nose?

Fingerprints!!!

What do you call a slow skier?

A slopepoke!!!

How do Eskimos make their beds?

With sheets of ice and blankets of snow!!!

A New Year's resolution is something that goes in one year and out the other!!!



Fun Facts The name, given to the month of 'January', is derived from the ancient Roman name 'Janus' who presided over the gate to the New Year. He was revered as the 'God of Gateways', 'of Doorways' and 'of the Journey.' Janus protected the 'Gate of Heaven', known as the 'Lord of Beginnings', is associated with the 'Goddess Juno-Janus', and often symbolized by an image of a face that looks forwards and backwards at the same time. This symbolism can easily be associated with the month known by many as the start of a new year which brings new opportunities. We cast out the old and welcome in the new. It is the time when many reflect on events of the previous year and often resolve to redress or improve some aspect of daily life or personal philosophy."

Birthstone: Garnet Flower: Carnation Capricorn: December 22 - January 19 / Aquarius: January 20 - February 18

FROM THE DESK OF THE SELECTMEN

The Chester Board of Selectmen will have a public discussion of the recently released "Police Shared Services Study between the towns of Chester and Blandford on Monday, January 14th at 6:30 in the Chester Town Hall auditorium. The Public is encouraged to come and listen, and ask questions.

FREE TAX PREP

Put money back in your pocket. Free tax prep by IRS-trained volunteers at the Village Enterprise Center, 26a Main Street, Chester. Call to make your appointment: 413-296-4536 ext. 100. Household income must be \$54,000 or less. Volunteers needed: weekdays, evenings, and weekends available.

Notes from Chester Highway Department

Residents should be aware that given the steep contours of some of our dirt roads and the icy conditions of winter, we highly recommend if you have a 4-wheel drive that you have good snow tires. If you have a 2-wheel drive you should have studded (aggressive) snow tires.

Chester Historical Society

2019 Historical Society Calendars are on sale at Chester Electric Light Office 15 Middlefield Rd., Chester Village Market 191 U.S. Rt. 20 or by calling Fay at 413-354-7820, Janice 354-7778 or Annette at 354-6314 for pick-up. This Chester History Museum fundraiser calendar features the Chester Department on the cover as Chief Richard Small including Department members received the Chester Hill Association 2016 Citizens of the Year Award. A well-deserved award for all they do for keeping us safe as well as supporting all activities of the Town of Chester. They are every day unsung heroes. The calendar continues to show Chester residents, old homes, Chester High School and Gateway graduates, Chester Veterans and offering a few surprises. As we are now thinking of 2020 calendars and if you have pictures you would like to donate, please contact us. Copies will be made and returned if so desired. We are always looking for and welcoming pictures and clippings you may have relating to Chester History. We strive to build our Veteran books at the Museum and continue to look for pictures and if anyone in your family was or is a veteran and you would like to share a phone with us please contact us with branch of service, dates served and any other information you would like to be included. These books are always on view by visiting or calling us. Our monthly meetings are held at the Old Jail on Route 21 during winter months and at the Chester History Museum across the street from the jail during summer months on the first Saturday of the month at 9 AM and all are welcome. Visits can be made at other times by contacting any member

WATER METER and PIPE FREEZE UPS

With the extremely low temperatures, residents could experience water meter freeze ups. This could result in broken pipes and water running into basements. We cannot stress enough the importance of keeping the area where your water meter is located above freezing. If your basement is unheated, not only is the water meter in danger of freezing, but your water pipes beyond the meter can also freeze resulting in flooding and potentially expensive repairs. There are insulated and/or electrical wraps that can be used as well as heaters or lights on timers. Also, please keep your faucet open just a little; running with just a trickle of water. This will help to avoid any pipes freezing.



GED/HiSET Test Prep: [Village Enterprise Center | 26 Main St, Chester](#)

English Language Arts/Writing GED Prep: Village Enterprise Center | 26 Main St, Chester
Computer Classes

Drop in Open Computer Help: VEC: 26 Main Street, Chester

Doing More with Microsoft Word VEC: 26 Main Street, Chester

Video Editing with Free Software [Russell Senior Center, 65 Main Street, Russell](#)

Support for Small Businesses

Biztro: Drop-in small business support with Jeanne LeClair. [VEC, 26a Main Street, Chester](#)

Schedule C Business Income Tax Info Session With Dorine Lasky VEC, 26a Main Street, Chester

Uploading and Editing YouTube Videos VEC: 26a Main Street, Chester.

co's Ladder Business Association (JLBA) monthly meeting [VEC: 26a Main St, Chester](#)

Social Media for business Support: with Mimi Caban Ross

Help with YouTube/ Etsy/ and Word Press VEC: 26a Main St, Chester

These classes are at the Hilltown CDC 387 Main Rd Chesterfield:

Linking Digital Ad to bus Growth: Session 1: with Tech support Hilltown CDC, 387 Main Rd, Chesterfield

Schedule C Business Income Tax Info Session With Dorine Lasky [Hilltown CDC, 387 Main Rd, Chesterfield](#)

Hikes

Hike Sanderson Brook Falls Meet at the trail head parking lot on Route 20, across from Bannish Lumber

Call or email for an appointment
Tuesdays/Thursdays Jan 3rd – 31st 10am-noon.

Weekly, Wednesdays 10am- noon
Tuesday, January 8, 10am-noon
January 22nd, 10am-noon

Monday, January 7th and 28th, 4-7:00pm
Wednesday, Jan 16th, 6-8pm
Thurs January 17, 6:-8pm
Thursday, January 10, 6-8pm
Wednesday Jan 23rd, 6-8pm
Tuesday, January 29, 6-8pm

Friday, January 18, 9-11am
Thurs January 24, 6:-8pm

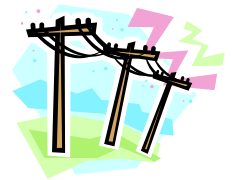
Sat/ Jan. 19, 10:am – 12pm

Power Outages & Downed Power Lines

Call 413-447-0268

First step: Report the outage

When your lights go out, let us know as soon as possible. When you speak to a representative, it's helpful if you can provide any of the following information: Are your lights dim or out? Did you check your fuse or breaker box for blown fuses or tripped circuits? Are your neighbors' lights out? Is a power line down? Did a tree limb fall on a power line? Is there any damage to the utility pole? Are the streetlights out? Did you hear a noise?



Next steps for your home

Turn off all electrical equipment, including your water heater, electric furnace or heaters, stove, washer and dryer, stereo and TV, to help prevent overloading the system when power is restored. (Major appliances can be turned off at the breaker box.) Do however, turn on a porch light and one inside light so you and CMELD's crew will know when service is restored.

If you see any downed utility line, stay far back and call CMELD: 413-447-0268. Keep children and pets away, too. A downed line doesn't have to spark to be dangerous. And a wire can be dangerous even if you're not touching it; water, metal, tree branches, concrete or other materials touching the wire can conduct electricity from a wire to you.

If your neighbor's power comes back on but yours does not, call CMELD again.

**PLEASE SIGN UP SO YOU WILL RECEIVE EMERGENCY
AND OUTREACH NOTIFICATIONS**

The Police Department is currently responsible for providing Emergency and Outreach notifications through the Blackboard Notification System. To help ensure you are included in future notifications and announcements, please go the Town of Chester website (townofchester.net) and click on the Emergency Alert System Sign-up. You will be prompted to enter your contact information. If already signed-up and want to update information, click on the Manage Account button. We use the system for emergency information and items of Town interest. **If you have difficulty with internet access, you may contact the Police Department where you can get help in adding your contact information. Please help us reach you for these important communications.**